



Case Study

THE ART OF PROTECTION

Versatile Material

It became necessary to install a dedicated air conditioning unit outside the building, with the need for good ventilation, and the need to be masked and protected at the same time.

Here is the history of the intervention. A sub-structure made of square-section tubing was installed in support of the original brick wall. Expanded mesh panels framed with a L-shaped profile and with an alternating composition pattern, recalling the arrangement of the bricks, were fixed. The intervention was completed by a second 'twin' cladding to give coherence to the front view.

Protection of technological installations

Often, as in this case, it is necessary to place air conditioning equipment and systems outside the building. It is therefore necessary both to mask the view and to ensure proper ventilation of the installation. Fils expanded metal mesh is ideal for precisely these functions.

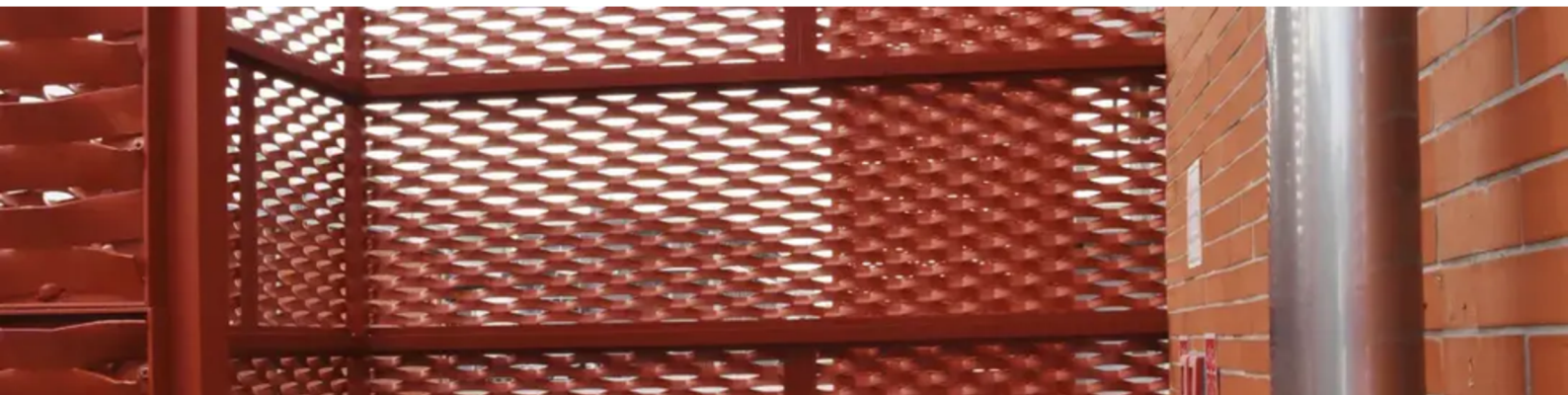
**Simple but
effective
solutions with
Expanded Metal
Mesh**



Ease of covering



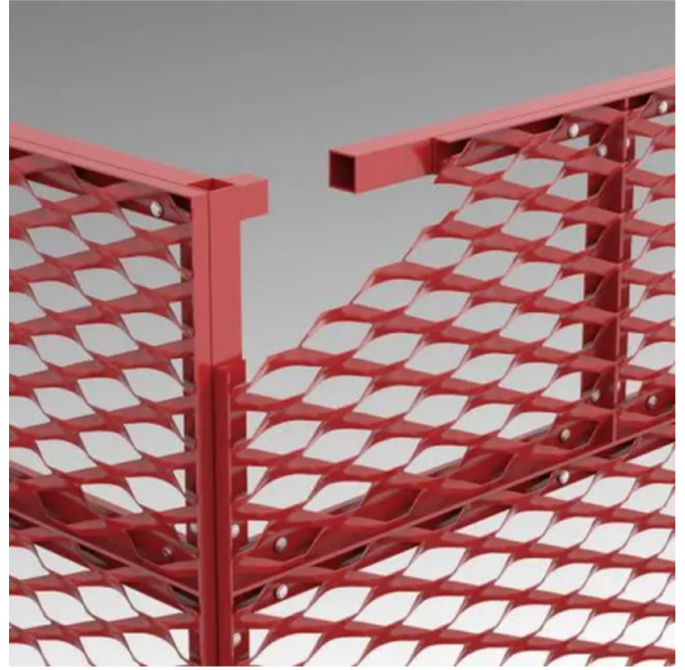
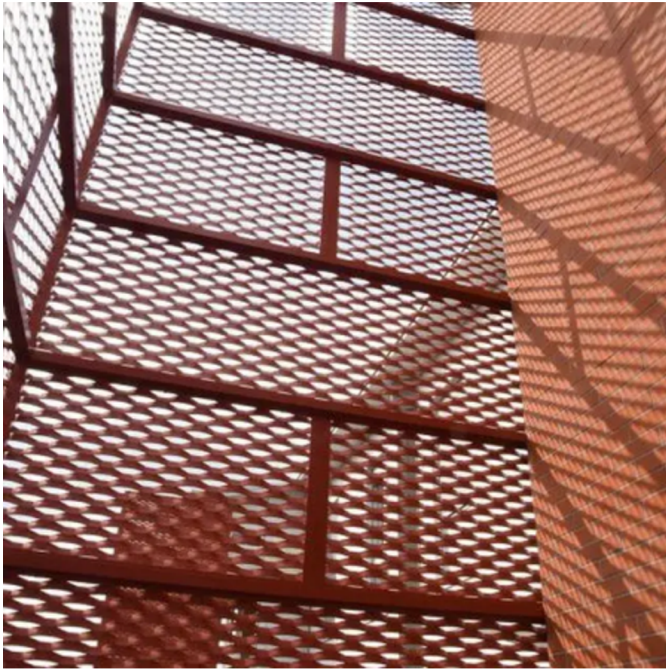
With an aluminium expanded metal cladding, it was possible to achieve the desired goal without costly masonry work. The cladding was consistent with the linear image of the building and provides total protection for the equipment housed inside. In the photo the moment of preparation with the panels ready on the ground.



Modular installation of alternating pitch panels



A very linear substructure of mullions and transoms was provided. Framed expanded metal mesh panels with an aluminium L-profile welded, brick-coloured, were used to maintain the aesthetic reference to the bricks in the structure. The metal mesh is an aluminium Lucerna, 2 mm thick, powder coated for outdoor use.





FORMING SAFE SPACES



METALSPAN Ltd
103b, 18-36 Wellington Street, London
SE18 6PF
United Kingdom

enquiries@metalspan.co.uk
www.metalspan.co.uk

+44 (0) 203 442 2575



METALSPAN®

