

METALSPAN®

FORMING SAFE SPACES

GREEN & SAFE

**RAIN
SCREEN
FAÇADES**

**M-SPAN
PLANK
SYSTEM**



FIRE SAFETY & SUSTAINABILITY

ALUCOPANEL®
DANUBE
GROUP



METALSPAN® develops metallic façade materials that prioritise fire safety while reducing the construction industry's carbon footprint. Driven by our ethical business values at Metalspan, we have developed METALSPAN® UK by ALUCOPANEL Metal Composite Material (MCM) that has achieved Euro - class A1 standard (Non-combustible) according to BS EN 13501-1 reaction to fire test for the design community, developers and contractors. METALSPAN by ALUCOPANEL leads the market with an A1 MCM non-combustible cladding material as a result of our research into the safety and performance of building façade materials.

METALSPAN® by ALUCOPANEL is produced by ALUCOPANEL ME, established over 14 years ago in the UAE. It has two production lines for MCM with an annual capacity of 2.5 million SQM and an in-house PVDF coating capacity of 10,000 SQM per day. ALUCOPANEL is a subsidiary of Danube, a diversified UAE group with 30 years of presence, \$1.4 billion revenue, and 2,500 employees.

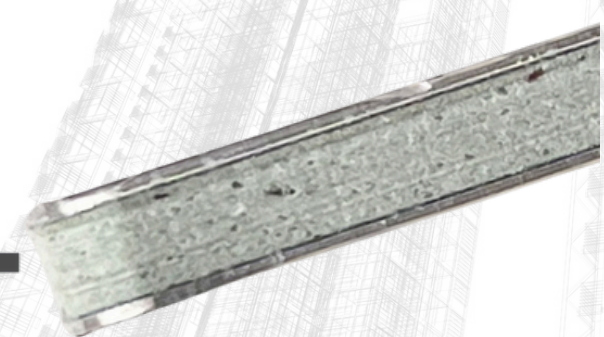
Production capacity:

- 2.5 million SQM Annual production capacity
- Range of RAL Colours
- in-house PVDF coating for perfect colour matching with world's best standards and 150 year old Beckers brand.



KEY ADVANTAGES OF OUR MCM MATERIAL OVER PPC COATED SOLID ALUMINUM CLADDING PANEL

- Non-Combustible Material - Euro Class A1
- 5 time faster in panel routing time compared to solid aluminium panel
- 200% more coverage when compared with 3 mm solid aluminium cladding making this a much more sustainable solution
- Unlimited RAL colours
- Light weight
- Better acoustic compared to solid aluminium
- Sheet size 1000 to 2000 mm wide x up to 4000 to 6000mm in length.
- Cost effective solution
- No oil canning effect
- High impact resistance



CORE

**100% INORGANIC MINERAL
A1 NON-COMBUSTIBLE**

**CLASSIFIED A1
NON-COMBUSTIBLE
MCM**

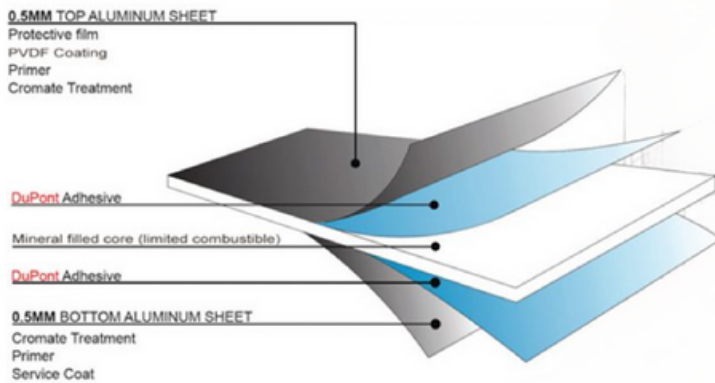


SAY NO TO FIRE SPREAD



**NBS Source
PARTNER**

EURO CLASS A1 FAÇADE MATERIAL



PRODUCT COMPOSITION

ISO 9001 QMS Certification is an international standard for the quality management system, provided and audited by SGS Middle East.

Fire Testing and Certification M/s Thomas Bell-Wright International is a Dubai-based certification body accredited by UKAS, GAC, IAS and EIAC which was engaged in the auditing of Alucopanel® A1 manufacturing and sampling for Reaction to the first test EN 13501-1:2018 and Self & Flash Ignition fire test ASTM D1929-16 on its core material, as well as Full-scale façade fire propagation test according to NFPA 285-2019 required in the Latest Edition of UAE Fire & Life Safety Code of Practice. After successful results, Alucopanel® A1 received product certification no. TBW0300647 on the 30th September 2020 and external wall façade system certification no. TBW0300672 on the 17th December 2020, making it the world's first DCD-Approved External Wall Façade System having Euroclass A1 ACM.

Dubai Municipality Certification Technical Approval by Dubai Central Lab involves a holistic review of product compliance and manufacturing.

METALSPAN® by ALUCOPANEL® A1 is a bonded metal composite material cladding solution that complies with the non-combustibility requirements of the EN 13501-1.

Alucopanel® A1 is manufactured in a quality-controlled and regularly-audited factory. The auditing has been undertaken in three separate product and quality control schemes as described:

Façade Tests completed and passed:

- BS EN13501-1 Reaction to Fire Test
- CWCT Rain-screen Cladding Test UK (Cassette panel)
- NFPA 285 : Full scale Fires Test System USA.
- First Dubai Civil Defence approved in the world
- AS 1530-1 Australian Standard



M-SPAN BETTERFIX PLANK SYSTEMS

M-SPAN Plank system has been designed and engineered to have secretly fixed MCM planks to create a rear ventilated Rainscreen façade. Our plank system has been used in a number of UK projects and our MCM material has been used on internationally renowned projects.

Our BetterFIX M-SPAN plank system with wood finish panels can be designed with a 15–60 mm shadow gap using an attached aluminium profile, offering an innovative, fast-track installation solution. It provides a perfect alternative to natural wood while supporting sustainability. The panels are available in a range of wood and solid colours, made from highly durable PVDF and HDPE-coated material featuring the world-renowned Beckers paint brand, which has over 150 years of history.

M-SPAN BETTERFIX M12 VERTICAL PLANK SYSTEM



Lambeth High Street Apartment
M-SPAN BetterFIX M12 profile used

SAY NO TO FIRE SPREAD



NBS Source
PARTNER

M-SPAN BETTERFIX PLANK SYSTEMS

M-SPAN BETTERFIX M12 VERTICAL PLANK SYSTEM



Lambeth High Street Apartment
M-SPAN BetterFIX M12 profile used

SAY NO TO FIRE SPREAD



NBS Source
PARTNER



M-SPAN BetterFix-M12
Vertical Plank system



Lambeth High Street Apartment
M-SPAN BetterFIX M12 profile used

M-SPAN BETTERFIX M13 HORIZONTAL PLANK SYSTEM

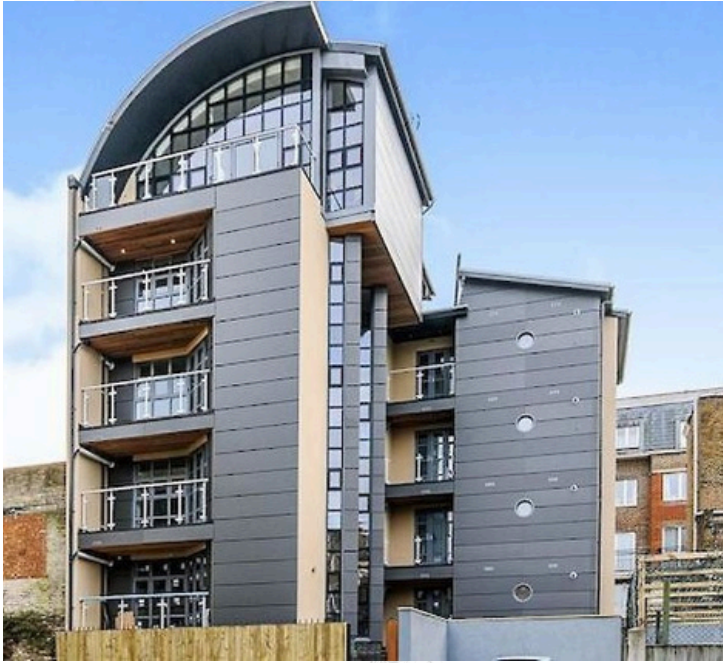


Camden High Street, London
M-SPAN BetterFIX M13 profile used

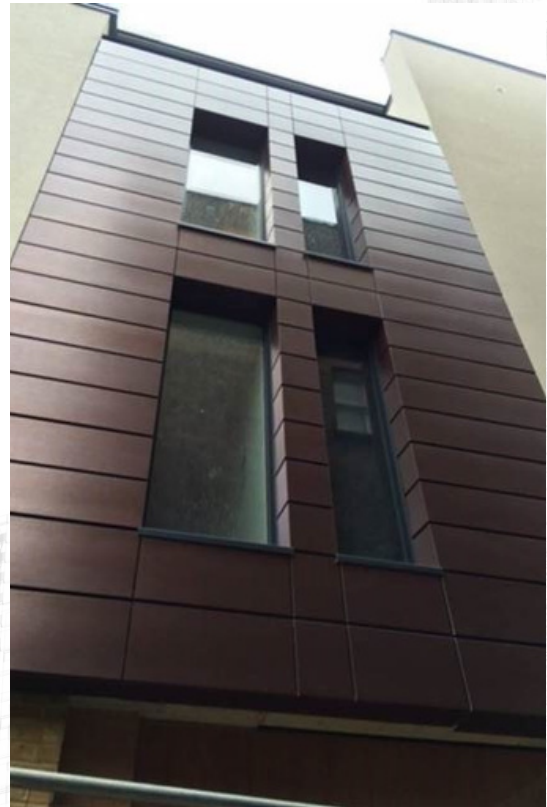
SAY NO TO FIRE SPREAD



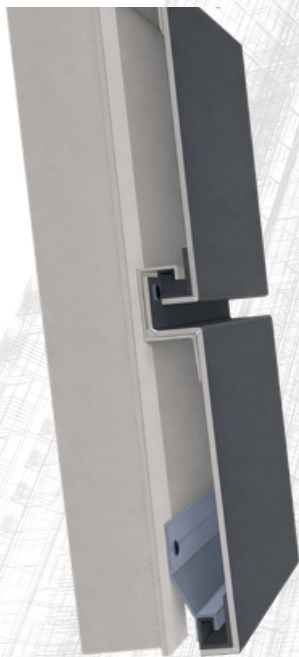
NBS Source
PARTNER



Cliff Street, Kent
M-SPAN BetterFIX M13 profile used



Camden High Street, London
M-SPAN BetterFIX M13 profile used



M-SPAN BetterFix-M13 Horizontal Plank system

SAY NO TO FIRE SPREAD



**NBS Source
PARTNER**

REFERENCES



King Abdullah Financial District -Riyadh, KSA
Product used: Alucopanel® FR
Volume: 65,000 SQM



John Curtin Medical Research Centre, Australia
Product used: Euroclass A1 non-combustible ACM
Volume: 5,000 SQM



Al Bayt Stadium in Qatar
Product used: Fire-safe Alucopanel® FR
Volume: 15,000 SQM



IKEA, Althalia Street, Jeddah, KSA
Product used: Alucopanel® FR
Volume: 12,500 SQM

SAY NO TO FIRE SPREAD



NBS Source
PARTNER



FORMING SAFE SPACES



MetalspanFacades Ltd
121, 18-36 Wellington Street London
SE18 6PF
United Kingdom

enquiries@metalspan.co.uk
metalspan.co.uk

+44 203 442 2575